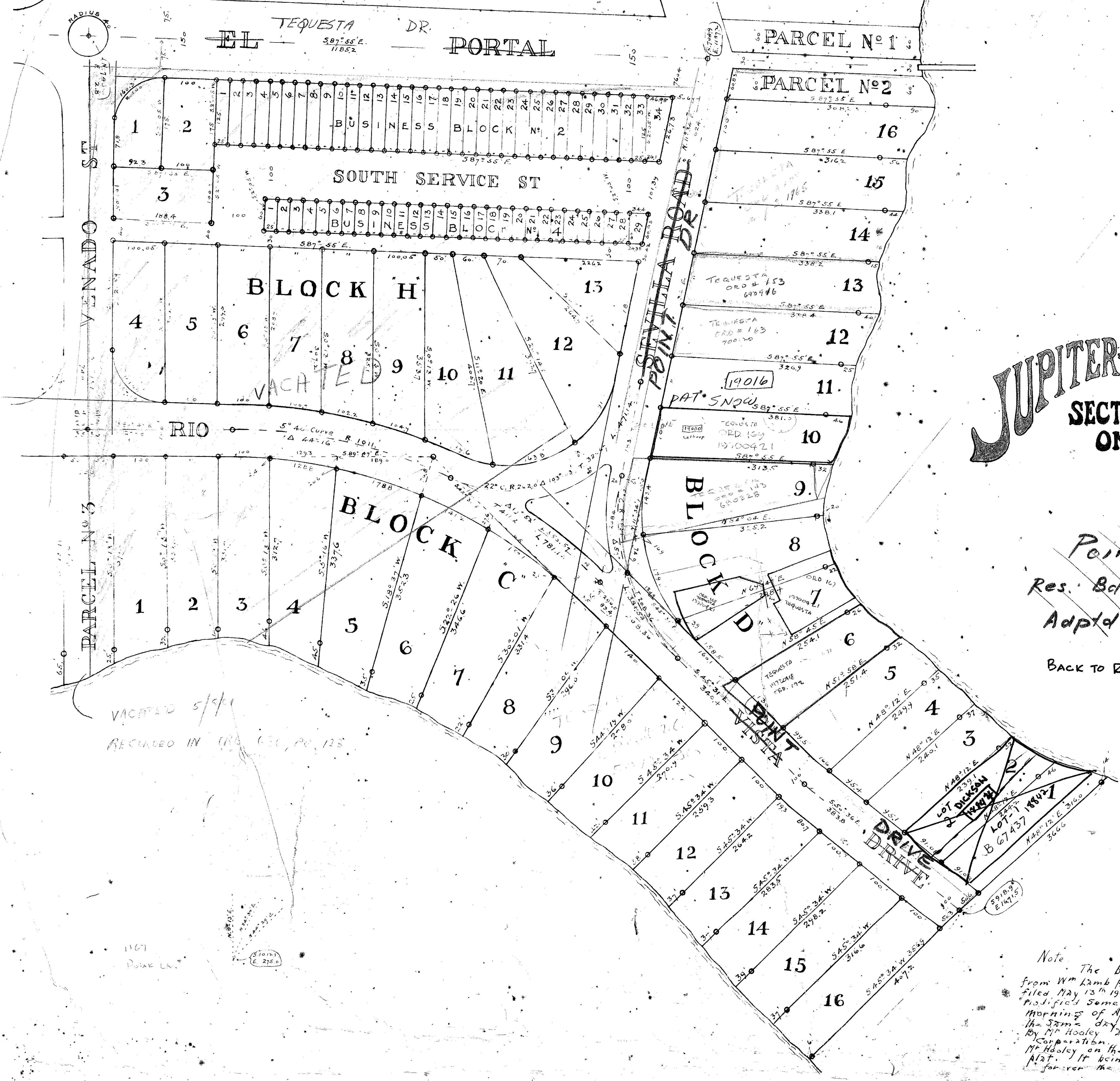


12-38

38



# JUPITER MANORS

SECTION ONE.

POINT DRIVE  
Res. Bd. of Co. Comm's  
Adptd. May 24, 1966  
BACK TO RIOVISTA DRIVE

STATE OF FLORIDA  
County of Palm Beach  
This instrument was filed for record at  
5:25 P.M. on the 11 day of June  
1966 and duly recorded on the 11 day of  
June 1966 in Book 38  
Page 125  
Notary Public  
C. C. ...

VACATED 5/9/61  
RECORDED IN 1966 VOL. 125

1000-592

2 AKA PART OF GVT LOT 3  
36/40/42

36/40/42  
QUAD 35  
36/40/42

17

38

Note: The boundary line as described in a deed from Wm Lamb patented to J.L. Brooks dated April 30, 1904 filed May 13, 1904 in Book 22 of Deeds page 122. The modification was made by Mr. Hooley and myself on the morning of April 12, 1925, in the afternoon of the same day. The modification was effected upon the cooperation of Mr. H.H. Van Vleet for the Rio Vista Estates Corporation. A week or two later it was fenced by Mr. Hooley on the modified line as shown upon this plat. It being the clear intention that this be forever the boundary line between them.

D.W. Van BEEK

PLAN HOLD CORPORATION - PALM BEACH, FLORIDA  
REGISTERED PROFESSIONAL SURVEYOR  
REPRESENTING: ...